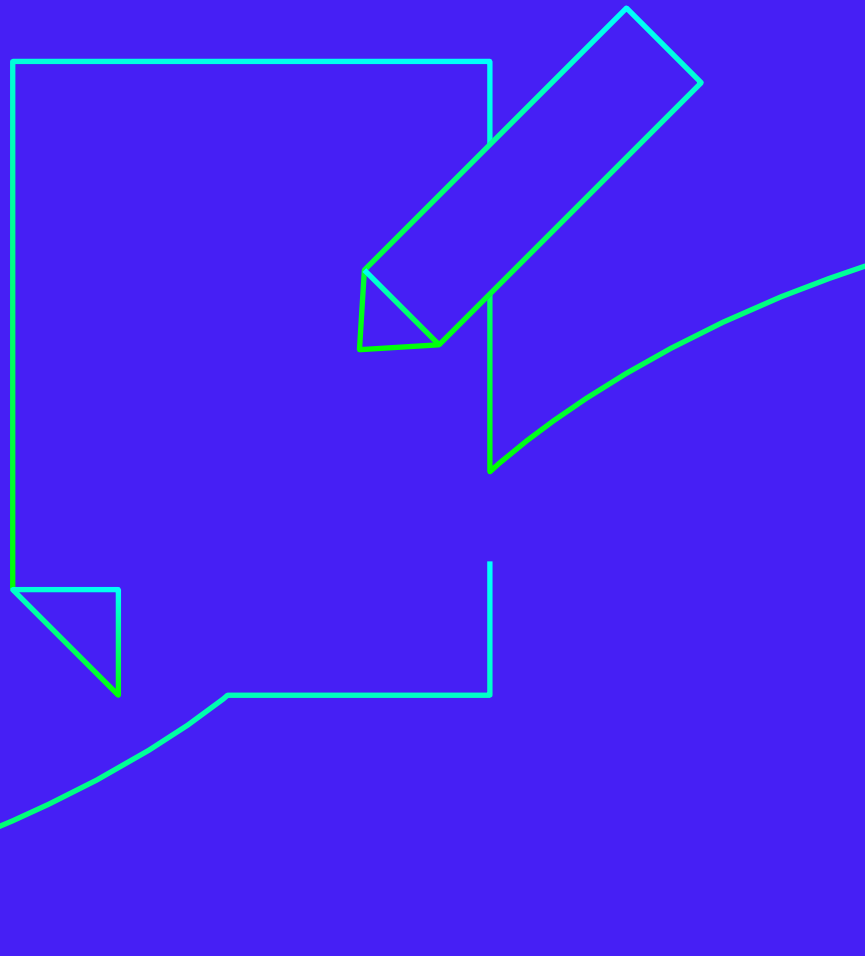


카테고리별 대표상품 성분표

Main materials of representative products



Main materials of representative products

Food Container

식품보관용기



Barohanggi Baby Food Container, Barohanggi Glass, Barohanggi Ceramic

Barohanggi

Component display (Barohanggi Baby Food Container Standard)
Body-Heat resistant glass
Lid-rubber (silicone rubber)



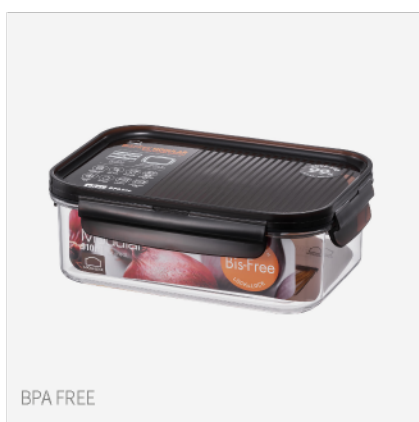
Top Class

Component display Body-color-free glass (for oven)/
Lid-poly cyclohexane-1, 4-demethyl terephthalate (PCT)/
Clip-polypropylene (PP)/Lid packing-rubber (silicone rubber)



Stainless Steel Modular

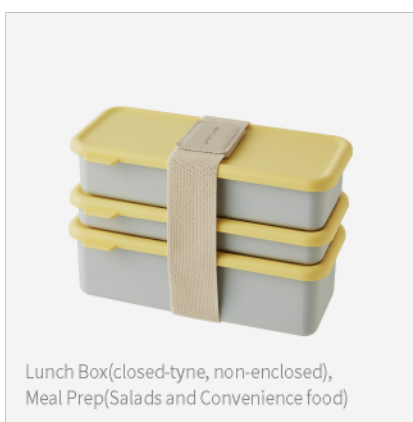
Component display Body-ST304/
Lid-poly cyclohexane-1, 4-demethyl terephthalate (PCT)/
Clip-polypropylene (PP)/Lid packing-rubber (silicone rubber)



BPA FREE

Bisfree Modular

Component display Body-Tritan/
Lid-polypropylene (PP)/Lid packing-rubber (silicone rubber)



Lunch Box (closed-type, non-enclosed),
Meal Prep (Salads and Convenience food)

Dosi Lock

Component display Lid/body-polypropylene
Lid packing-rubber (silicone)
Spoon, Chopsticks-Stainless



100% food grade eco-friendly sealed
container made from recycled plastic waste

Eco Lock

Component display Lid/body-polypropylene
Lid packing-rubber (silicone)



Classic

Component	Lid/body-polypropylene
display	Lid packing-rubber(silicone)

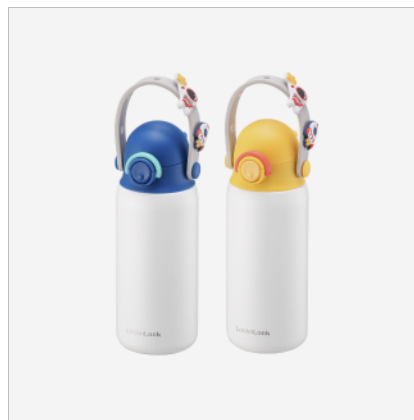
Beverageware

베버리지웨어



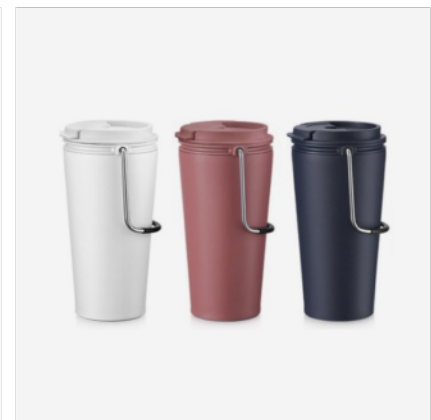
Metro Series

Component	[Metro mug standard]
display	Body-stainless steel 304/ Cap-polypropylene, acrylonitrile styrene(AS)/Packing-rubber (silicon rubber)



Kids Strap Tumbler&Bottle

Component	[Tumbler standard]
display	Body-stainless steel 304 Cap-polypropylene(PP) Packing-rubber(silicon rubber)

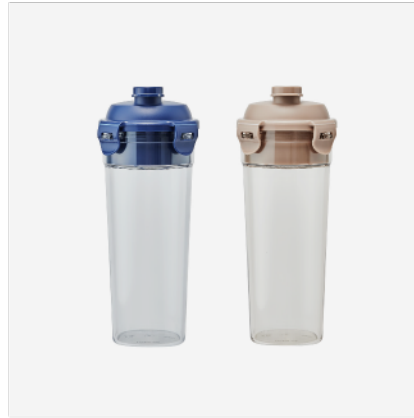


Bucket Tumbler FLIP

Component	Body-stainless steel 304
display	Cap-polypropylene(PP) Packing-rubber(silicon rubber)

**Dual Glass**

Component display Body-Heat-resistant glass
Cap/Straw-polypropylene(PP)
Cover-rubber(silicon rubber)

**Classic Tea Bottlet**

Component display Body-Tritan
Cap-polyethylene(PE)
Cover/filter-polypropylene(PP)
Packing-rubber(silicon rubber)
Hand strap-rubber,polypropylene(PP)

**One Touch Water Bottle**

Component display Body-cyclohexane-1, 4-dimethyl terephthalate(PCT)/Top cap//
Hand strap,Filter-polypropylene(PP)/Lower cap-polypropylene(PP)+rubber(silicon rubber)/
Packing-rubber(silicon rubber)

**Metro Drive Tumbler/Metro Double Tumbler**

Component display Cap-polypropylene,
Acrylonitrile styrene(AS)/
Packing-rubber (silicon rubber)
/Straw-Tritan
/Body-stainless steel 304

**Metro Edge Tumbler**

Component display Cap-polypropylene(PP)
Packing-Silicone
Body-stainless steel 304

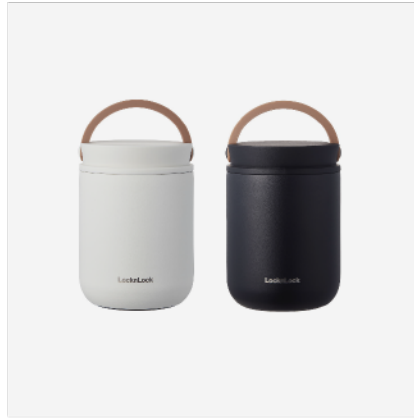
**Slim Fit Tumbler**

Component display Packing-rubber(silicon rubber)
Body(Inside)-stainless steel 316
(Outside)-stainless steel 304



Metro Two-way Tumbler

Component display Cap-polypropylene(PP)
Packing-rubber(silicon rubber)
Body-stainless steel 304



Metro Food Jar

Component display Cover-97% polyester, 3% span
Cap-polypropylene(PP)
Packing-Silicone
Body(Inside)-stainless steel 316L
(Outside)-stainless steel 304

Cookware

쿡웨어



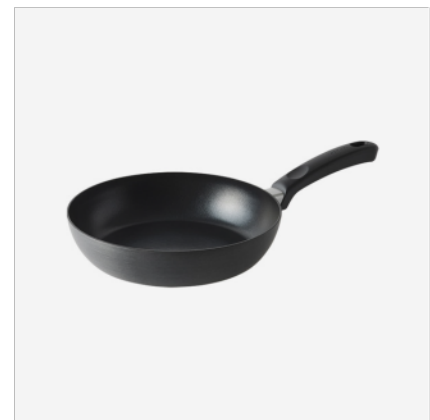
Decore

Component display [Frying pan]Body-aluminum, Handle-bakelite (Interior: titanium coating, Exterior:ceramic coating) [Pot] Body-aluminum, Handle-bakelite (Interior/exterior:ceramic coating)



Suit IH

Component display [Frying pan] Body-aluminum, Handle-bakelite (Interior:titanium coating, Exterior:ceramic coating) [Pot] Body-aluminum, Handle-bakelite (Interior/exterior:ceramic coating) Lid-Silicone, Glass, stainless steel



Hard&Light

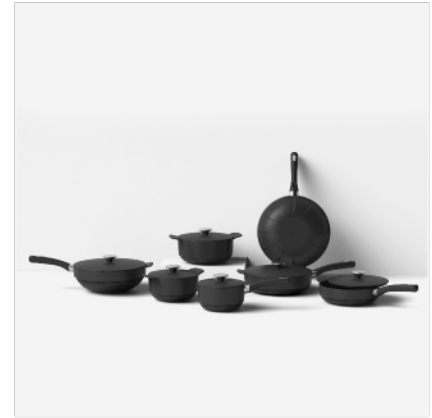
Component display Body-aluminum plate(Interior: hard+fluorine resin coating, exterior:hard) Handle-aluminum (Brackets), bakelite

**Soma**

Component display Body-aluminum(Interior:fluorine resin coating) Handle-bakelite, stainless steel

**Salon**

Component display [Frying pan]Body-aluminum (Interior:fluorine carbon resin coating), stainless steel Handle-bakelite
[Pot] Body-aluminum(Interior: ceramic coating), stainless steel Lid-aluminum, stainless steel

**Wave**

Component display Body-aluminum(Interior: fluorine resin coating), stainless steel

Small Appliance

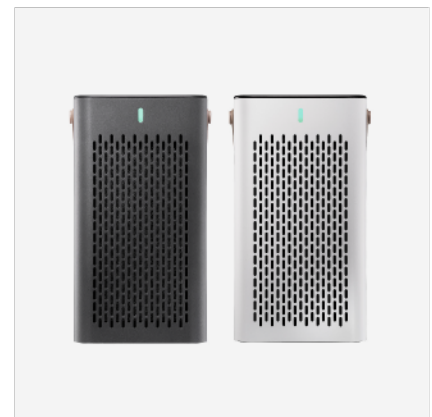
소형가전

**Steam Fryer S2**

Component display Body-SPCC(Cold Rolled Steel) Inside(tray included)-stainless steel 304/Front door-Triple Tempered Glass/Bucket-Tritan

**Vacuum Rice Container**

Component display Body/Cap-ABS Scoop-polypropylene(PP) Cap packing-rubber(silicone rubber)

**Kitchen Air Purifier**

Component display Body-NONYL Top Case-ABS Filter Housing-stainless steel 304 Strap-PCTG



Knife&Chopper Sterilizer 2.0

Component display Body-ABS
Cutting board-Polyurethane



COZY Air Fryer

Component display Body-polypropylene(PP)
Frying pan-aluminum plate
(Interior:fluorine resin coating)
Handle-ABS



Food Waste Cooler

Component display Body/Cap/Inner bottle-ABS
Inner bottle handle-steel
(chrome plating)
Cap packing-rubber(silicone rubber)



Multi Electric Lunch Box

Component display Body/Cap/Cup/Vent pipe-
polypropylene(PP)
Lunch Box-stainless steel 304
Dial-ABS
Handle-polypropylene(PP)



Steam Air Fryer S1A

Component display Body-polypropylene(PP)
Inside-stainless steel 304



Vacuum Pet Food Container

Component display Body/Cap-ABS
Cap packing-rubber(silicone rubber)

LocknLock